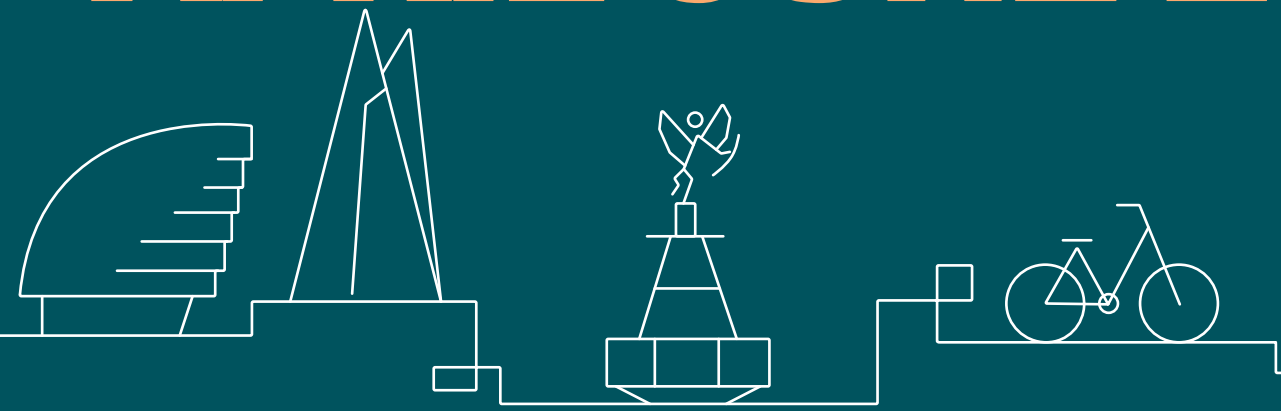


GROW LONDON LOCAL BOROUGH UPDATES APRIL-JUNE 2024



LONDON
& PARTNERS



Introduction



Grow London Local (GLL) is the one place to get free access to small business support in our city.

Small businesses have faced significant challenges as they recover from the cumulative effects of the coronavirus pandemic, Brexit and the cost-of-living crisis, and it is vital that we offer them as much support as possible to navigate these challenges.

We're on a mission to change that – to remove barriers and to create a level playing field for London-based entrepreneurs and small business founders. No matter where businesses are based in London, they can find relevant support and guidance, as well as opportunities to connect with like-minded business owners at our events.



About Grow London Local



Grow London Local (GLL) is active in all of London's 33 boroughs. Our Business Support Managers are out in the community, meeting entrepreneurs supporting them to set up and grow their businesses. Our digital platform, [grow.London/local](https://grow.london/local), connects entrepreneurs with relevant support and guidance and provides opportunities to connect with like-minded business owners.

This report is broken down into four sections, one for each of London's sub-regional partnerships. It provides an update on GLL delivery in each borough from April-June 2024 and includes plans for July-September 2024.



TOTAL SINCE GROW LONDON LOCAL LAUNCH



Net Promoter Score
from entrepreneurs
supported – considered
“**excellent**” by
industry standards.



88%
of SME founders
are Black or minority
ethnic, female or
have a disability.



by our in-community Business
Support Managers – meeting
entrepreneurs in markets,
Jobcentre Plus locations,
libraries, colleges and more.



Helped
3,550
entrepreneurs
to access support



support providers across London
boroughs, FE colleges, universities,
chambers of commerce, business
improvement districts, charities
and businesses.



Pan-London Impact April-June 2024

Businesses Engaged



62,595
Digital



2,519
In-person



65,114
Total

Businesses Supported



485
Digital*



1,338
In-person



1,823
Total

Top Business Sectors Supported

1. Business Services
2. Food & Drink
3. Other / Health, Fitness & Wellness

Top Requests – Business Support

1. Marketing
2. Finance
3. Planning

SMEs Supported by Business Stage



32% Pre-start up

68% SME



Notes for use

Notes for use:

- Service provision
 - Borough Service Provision – support provision for entrepreneurs registered with GLL that is delivered directly by the borough
 - Service Delivery Partner Provision – support provision for entrepreneurs registered with GLL that is commissioned by the borough and delivered by another party
 - Service provision is also delivered by
- The number of entrepreneurs supported in each borough is a combination of those who might not have established their business yet and SMEs supported via our in-person and digital routes.
- ‘Service Delivery Partners’ is the number of delivery partners commissioned by the borough registered with GLL to deliver business support.
- ‘Service Delivery Partner provision’ is to the number of Delivery Partner provision registered with GLL.
- ‘Borough Service provision’ is to the number of support provision offered by the borough registered with GLL. Some boroughs commission business support services to delivery partners so will not deliver their own provision or may not have registered their provision with GLL.
- ‘SMEs Referred to Borough / Delivery Partner provision’ is the combined total of SMEs referred to Borough or service delivery partner provision.
- We intend to provide the top three sectors using the platform however in cases where there are an equal percentage of sectors represented, more than three are shown.



SOUTH LONDON PARTNERSHIP



Richmond upon Thames

Number of entrepreneurs supported in borough by quarter

10

Nov-Oct-Dec 2023

22

Jan-Mar 2024

24

Apr-Jun 2024

The data below shows activity in borough since the launch of GLL to the end of June 2024

56

Entrepreneurs Supported

0

Service Delivery Partners

0

Service Delivery Partner provision

0

Borough Service provision

N/A

Entrepreneurs supported and referred to Borough or Delivery Partner provision

The Richmond team, led by Danny O’Sullivan and supported by Nick Wadsworth, has continued to attend regular networking events in the borough, hosted by Zoco, Athena, FSB, and Roehampton University.

Face to face outreach activities continued within KT1 and KT3 postcodes areas, and continued relationships with Patch and Twickenham BID have allowed us to engage with even more small businesses in the borough.

Looking ahead, we plan to identify and establish a presence within local markets and community events, work closely with the council to build awareness of the Grow London Local service further.



TOP 3 AREAS OF SUPPORT REQUESTED

Marketing

Finance

Sales



TOP SECTORS USING THE PLATFORM

Accommodation & food service

Business services / Art, entertainment & recreation / Professional consultant / Construction

Click [here](#) to view the GLL Q1 Impact report which contains pan-London data

Kingston upon Thames

Number of entrepreneurs supported in borough by quarter

15

Nov-Oct-Dec 2023

17

Jan-Mar 2024

19

Apr-Jun 2024

The data below shows activity in borough since the launch of GLL to the end of June 2024

51

Entrepreneurs Supported

0

Service Delivery Partners

0

Service Delivery Partner provision

6

Borough Service provision

5

Entrepreneurs supported and referred to Borough or Delivery Partner provision

The Kingston team, led by Danny O’Sullivan and supported by Lai Hung, has been working hard to establish a physical presence in the borough, attending numerous events, including the Hong Kong Seminar and Supply Chain conference.

Continued attendance at Chamber of Commerce events, and various networking groups (including Omni, Surbiton Business Community and Third Tuesday Club) has further helped us to engage with local SMEs – as has our new ‘hub’ space at Job Centre Plus, Kingston.

Looking ahead, we hope to build our relationship with Kingston University, and to increase our reach within the Hong Kong Community. We also hope to attend more local markets and community events.



TOP 3 AREAS OF SUPPORT REQUESTED

Marketing

Finance

Planning



TOP SECTORS USING THE PLATFORM

Tech & apps

Arts, entertainment & recreation / Beauty & cosmetics / General retail / Financial & insurance activities

Click [here](#) to view the GLL Q1 Impact report which contains pan-London data

Merton

Number of entrepreneurs supported in borough by quarter

10

Nov-Oct-Dec 2023

18

Jan-Mar 2024

18

Apr-Jun 2024

The data below shows activity in borough since the launch of GLL to the end of June 2024

46

Entrepreneurs Supported

0

Service Delivery Partners

0

Service Delivery Partner provision

0

Borough Service provision

N/A

Entrepreneurs supported and referred to Borough or Delivery Partner provision

The Merton team, led by Danny O’Sullivan and supported by Edwina Hughes, has continued to establish Grow London Local’s presence within the borough through regular attendance at networking events, including St Raphael Business Club.

In-person outreach campaigns continued in and around Wandle Park, where the team offered in-person support to small businesses. A recent introduction by Sarah and Gurvinder has helped us forge a new relationship with Moat Housing – with whom we plan to host a regular ‘drop in’ session in Pollards Hill.

Looking ahead, we aim to reconnect with Wimbledon BID, and to attend more local markets and community events.



TOP 3 AREAS OF SUPPORT REQUESTED

Marketing

Finance

Sales



TOP SECTORS USING THE PLATFORM

Food & drink

Business services

Education

Click [here](#) to view the GLL Q1 Impact report which contains pan-London data

Sutton

Number of entrepreneurs supported in borough by quarter

3

Nov-Oct-Dec 2023

11

Jan-Mar 2024

20

Apr-Jun 2024

The data below shows activity in borough since the launch of GLL to the end of June 2024

34

Entrepreneurs Supported

1

Service Delivery Partners

1

Service Delivery Partner provision

0

Borough Service provision

19

Entrepreneurs supported and referred to Borough or Delivery Partner provision

The Sutton team, led by Danny O’Sullivan and supported by Edwina Hughes, has continued to establish Grow London Local’s presence within the borough through regular attendance at networking events (including Sutton FC, Sutton Businesswomen’s Networking, and 125 Business Club).

In-person outreach campaigns continued in and around Cheam, where the team offered in-person support to small businesses. A strong relationship is building with St Raphael’s Hospice – who we’re thrilled to be working with on our next “Coffee Friday” event.

Looking ahead, we’re excited to collaborate with Ibento Events and The Retail Group. We’re also hoping to strengthen our relationships within the Hong King community in Sutton, and to identify and attend local markets and community events.



TOP 3 AREAS OF SUPPORT REQUESTED

Marketing

Planning

Sales



TOP SECTORS USING THE PLATFORM

Food & drink / Health, fitness & wellness / Creative & media / Professional consultant / Beauty & cosmetics / Construction / Information & communication

Click [here](#) to view the GLL Q1 Impact report which contains pan-London data

Croydon

Number of entrepreneurs supported in borough by quarter

13

Nov-Oct-Dec 2023

49

Jan-Mar 2024

62

Apr-Jun 2024

The data below shows activity in borough since the launch of GLL to the end of June 2024

124

Entrepreneurs Supported

1

Service Delivery Partners

1

Service Delivery Partner provision

0

Borough Service provision

3

Entrepreneurs supported and referred to Borough or Delivery Partner provision

The Croydon team, led by Danny O’Sullivan and supported by Danny Gomez, has been working hard to build relationships with key stakeholders in the borough, including StartUp Croydon where we held our recent “Coffee Friday” networking event, Southbank University and South London Partnership.

Newly formed partnerships with Post Office, Clarion housing and Job Centre Plus have enabled us to have a regular presence within the borough, offering in-person support to local businesses.

Looking ahead, plans include identifying local markets and community events, connecting with co-working spaces, and further developing the ‘road show’ style presence of Grow London Local within Croydon.



TOP 3 AREAS OF SUPPORT REQUESTED

Marketing

Finance

Planning



TOP SECTORS USING THE PLATFORM

Health, fitness & wellness

Food & drink

Creative & media

Click [here](#) to view the GLL Q1 Impact report which contains pan-London data

CENTRAL LONDON FORWARD



Haringey

Number of entrepreneurs supported in borough by quarter

8

Nov-Oct-Dec 2023

39

Jan-Mar 2024

44

Apr-Jun 2024

The data below shows activity in borough since the launch of GLL to the end of June 2024

91

Entrepreneurs Supported

0

Service Delivery Partners

0

Service Delivery Partner provision

2

Borough Service provision

2

Entrepreneurs supported and referred to Borough or Delivery Partner provision

The Haringey team, led by Abdus Salam, has been actively developing new relationships with local community and network groups such as The Trampery and Wood Green Business Library.

The team has been engaging with local businesses in Tottenham town centre and collaborating closely with the Selby Trust Centre (Enterprise Professional Support Programme). We have also been working with Tottenham Job Centre and are introducing a monthly drop-in session.

We have been working closely with Wood Green Library and hope to start using their venue for our small business meet-up sessions. Additionally, we have been introduced to the lead for Employability and Skills at Haringey Works. Looking ahead, we will resume our discussions with Haringey Works and The Trampery to create 'hub' spaces where small business owners can meet with our Business Support team face-to-face..



TOP 3 AREAS OF SUPPORT REQUESTED

Marketing

Planning

Finance & Digital



TOP SECTORS USING THE PLATFORM

Creative & media

Food & drink / Health fitness & wellness / Arts, entertainment & recreation / Education / Fashion & jewellery

Click [here](#) to view the GLL Q1 Impact report which contains pan-London data

Hackney

Number of entrepreneurs supported in borough by quarter

33

Nov-Oct-Dec 2023

61

Jan-Mar 2024

64

Apr-Jun 2024

The data below shows activity in borough since the launch of GLL to the end of June 2024

158

Entrepreneurs Supported

1

Service Delivery Partners

1

Service Delivery Partner provision

0

Borough Service provision

41

Entrepreneurs supported and referred to Borough or Delivery Partner provision

The Hackney team, led by Abdus Salam, has been actively engaging with local service providers and forging partnerships with Hackney Impact and Rebel.

We have participated in local business networking events and conducted two drop-in sessions at Hoxton JCP, successfully reaching our target group. Moving forward, we will maintain a monthly drop-in session. With our newly formed partnerships with the Post Office, we have a regular presence in Stamford Hill post office.

Looking ahead, the team will concentrate on identifying and attending additional events and networking opportunities to broaden our engagement. We are also in discussions with Creative Wick to present and provide support to local businesses in the Hackney Wick area.



TOP 3 AREAS OF SUPPORT REQUESTED

Marketing

Finance

Planning



TOP SECTORS USING THE PLATFORM

Food & drink / Health fitness & wellness / Arts, entertainment & recreation / Homewares

Tower Hamlets

Number of entrepreneurs supported in borough by quarter

25

Nov-Oct-Dec 2023

42

Jan-Mar 2024

75

Apr-Jun 2024

The data below shows activity in borough since the launch of GLL to the end of June 2024

142

Entrepreneurs Supported

0

Service Delivery Partners

0

Service Delivery Partner provision

10

Borough Service provision

0

Entrepreneurs supported and referred to Borough or Delivery Partner provision

The Tower Hamlets team, led by Abdus Salam, has been actively engaging with local networks and building strong relationships with the local Jobcentre Plus (JCP) office. We have successfully organised a GLL coffee networking event at Poplar Harca. Our collaboration with Poplar Works and the local JCP has created opportunities where we meet with small businesses in-person.

Our participation in further education (FE) events has enabled us to reach a wider audience and foster meaningful connections.

In the upcoming quarter, the team will focus on identifying and attending additional events and networking opportunities to broaden our engagement and to offer more support to businesses and individuals in Tower Hamlets.



TOP 3 AREAS OF SUPPORT REQUESTED

Marketing

Finance

Digital



TOP SECTORS USING THE PLATFORM

Health, fitness & wellness

Food & drink / Arts, entertainment & recreation / Professional consultant

Click [here](#) to view the GLL Q1 Impact report which contains pan-London data

Camden

Number of entrepreneurs supported in borough by quarter

40

Nov-Oct-Dec 2023

64

Jan-Mar 2024

68

Apr-Jun 2024

The data below shows activity in borough since the launch of GLL to the end of June 2024

172

Entrepreneurs Supported

0

Service Delivery Partners

0

Service Delivery Partner provision

4

Borough Service Provision

10

Entrepreneurs supported and referred to Borough or Delivery Partner provision

The Camden team, led by Abdus Salam, has been actively engaging with local networks and building strong relationships with Santander Workspace and the local Jobcentre Plus (JCP) office in Kentish Town. We have held four successful drop-in sessions at LabTech and two Santander Coffee Friday events where like-minded entrepreneurs shared their challenges and found out how GLL can support them.

Our next drop-in session at Kentish Town JCP will be in July 2024 and this will become a regular monthly drop-in session which will help us connect and support entrepreneurs in the borough.

Looking ahead, the team will focus on identifying and attending additional events and networking opportunities to broaden our engagement and provide greater support to businesses and individuals in Camden.



TOP 3 AREAS OF SUPPORT REQUESTED

Marketing

Digital

Sales



TOP SECTORS USING THE PLATFORM

Food & drink

Health, fitness & wellness

Creative & media / Education / Tech & apps / General retail / Accommodation & food service

Click [here](#) to view the GLL Q1 Impact report which contains pan-London data

Islington

Number of entrepreneurs supported in borough by quarter

24

Nov-Oct-Dec 2023

45

Jan-Mar 2024

68

Apr-Jun 2024

The data below shows activity in borough since the launch of GLL to the end of June 2024

137

Entrepreneurs Supported

1

Service Delivery Partners

3

Service Delivery Partner Provision

2

Borough Service Provision

17

Entrepreneurs supported and referred to Borough or Delivery Partner provision

The Islington team, led by Abdus Salam, has been actively engaging with local networks and building strong relationships with NatWest and the local Jobcentre Plus (JCP) offices at Finsbury Park and Barnsbury.

We held our first drop-in session at Finsbury JCP, which will now be a regular monthly session on the last Wednesday of each month where small business owners will be able to have a consultation with our Business Support team face-to-face. Additionally, we have been attending local business networking events to expand our reach.

Looking ahead, the team will focus on identifying and participating in more events and networking opportunities to enhance our engagement efforts and provide greater support to businesses and individuals in Islington.



TOP 3 AREAS OF SUPPORT REQUESTED

Marketing

Finance

Planning



TOP SECTORS USING THE PLATFORM

Information & communication

Business services / Creative & media / Tech & apps

Click [here](#) to view the GLL Q1 Impact report which contains pan-London data

Westminster

Number of entrepreneurs supported in borough by quarter

21

Nov-Oct-Dec 2023

46

Jan-Mar 2024

45

Apr-Jun 2024

The data below shows activity in borough since the launch of GLL to the end of June 2024

112

Entrepreneurs Supported

0

Service Delivery Partners

0

Service Delivery Partner Provision

3

Borough Service Provision

11

Entrepreneurs supported and referred to Borough or Delivery Partner provision

The Westminster team, led by Abdus Salam, has been actively developing new relationships with local community and network groups, such as The Abbey Centre, Westminster Business Library, and Westminster University Enterprise Network.

The Abbey Centre has agreed to display and shared our marketing materials with their networks. Attending their monthly coffee morning events and participating in Westminster University's enterprise network have been very fruitful in helping us to provide support to more businesses. More recently, we've been working closely with Westminster Business Library, attending their workshop events.

Looking ahead, we hope to start using Westminster Business Library location for our upcoming small business meet-up sessions where small business owners can meet with our Business Support team face-to-face.



TOP 3 AREAS OF SUPPORT REQUESTED

Marketing

Finance

Digital



TOP SECTORS USING THE PLATFORM

Business services

Food & drink / Health fitness & wellness / Creative & media / Professional consultant / Accommodation & food service

Click [here](#) to view the GLL Q1 Impact report which contains pan-London data

Kensington & Chelsea

Number of entrepreneurs supported in borough by quarter

9

Nov-Oct-Dec 2023

23

Jan-Mar 2024

30

Apr-Jun 2024

The data below shows activity in borough since the launch of GLL to the end of June 2024

62

Entrepreneurs Supported

1

Service Delivery Partners

3

Service Delivery Partner Provision

0

Borough Service Provision

39

Entrepreneurs supported and referred to Borough or Delivery Partner provision

The Kensington & Chelsea team, lead by Rishi Kardile, has been trying to build new relationships with local communities and network groups. The team is also trying to establish hub space for small business owners to come and meet with the Business Support Manager in person.

Looking ahead, the team will focus on identifying and participating in events and networking opportunities to enhance our engagement efforts.



TOP 3 AREAS OF SUPPORT REQUESTED

Marketing

Finance

Planning



TOP SECTORS USING THE PLATFORM

Health, fitness & wellness / Arts, entertainment & recreation / Beauty & cosmetics / Wholesale & retail trade

Click [here](#) to view the GLL Q1 Impact report which contains pan-London data

Southwark

Number of entrepreneurs supported in borough by quarter

24

Nov-Oct-Dec 2023

46

Jan-Mar 2024

79

Apr-Jun 2024

The data below shows activity in borough since the launch of GLL to the end of June 2024

149

Entrepreneurs Supported

1

Service Delivery Partners

1

Service Delivery Partner Provision

3

Borough Service Provision

9

Entrepreneurs supported and referred to Borough or Delivery Partner provision

The Southwark team, led by Danny O'Sullivan and supported by Winnie Cheng, has made great progress across the borough this quarter. In Elephant and Castle, they've connected with the High Streets team, attended the business forum, and had discussions with Lendlease, all of which have created opportunities for more drop-in sessions, where we'll meet with small businesses in-person.

Collaborations with Job Centre Plus, Trampoline CIC, Peabody, Hyde, Better Bankside, Camberwell Library, the Herne Hill Traders' Association, and Team London Bridge BIDs have helped us to increase our presence in the borough.

Looking ahead, plans include participating in borough specific markets and community events, like the Urban Elephant Festival, and strengthening ties with South Bank University and Hotel Elephant.



TOP 3 AREAS OF SUPPORT REQUESTED

Marketing

Planning

Finance



TOP SECTORS USING THE PLATFORM

Health, fitness & wellness

Business services / Food & drink / Arts, entertainment & recreation

Click [here](#) to view the GLL Q1 Impact report which contains pan-London data

Wandsworth

Number of entrepreneurs supported in borough by quarter

17

Nov-Oct-Dec 2023

33

Jan-Mar 2024

46

Apr-Jun 2024

The data below shows activity in borough since the launch of GLL to the end of June 2024

96

Entrepreneurs Supported

0

Service Delivery Partners

0

Service Delivery Partner Provision

0

Borough Service Provision

N/A

Entrepreneurs supported and referred to Borough or Delivery Partner provision

The Wandsworth team, led by Danny O’Sullivan and supported by Nick Wadsworth, has continued to find new ways of engaging with small businesses across the borough, including a new collaboration with Jobcentre Plus Wandsworth.

We held a successful “Coffee Friday” networking event at Putney Pantry and carried out a series of in-person drop-in sessions in tooting and Southfields.

A recent meeting with Jenni Asiama, Enterprise & Business Communications Manager, has helped us to identify new opportunities for the next quarter – when we also aim to connect with co-working spaces (including Tooting works and BLP), build our relationship with JCP, and attend markets and community events.



TOP 3 AREAS OF SUPPORT REQUESTED

Marketing

Finance

Planning



TOP SECTORS USING THE PLATFORM

Food & drink / Arts, entertainment & recreation / Professional consultant / Construction

Lambeth

Number of entrepreneurs supported in borough by quarter

23

Nov-Oct-Dec 2023

50

Jan-Mar 2024

74

Apr-Jun 2024

The data below shows activity in borough since the launch of GLL to the end of June 2024

147

Entrepreneurs Supported

1

Service Delivery Partners

2

Service Delivery Partner Provision

0

Borough Service Provision

1

Entrepreneurs supported and referred to Borough or Delivery Partner provision

The Lambeth team, led by Danny O’Sullivan and supported by Danny Gomez, has been busy building new relationships with London Southside Chamber of Commerce, Streatham and Station to Station BIDS, and Meanwhile Space (where we plan to host regular ‘drop in’ sessions, offering in-person support to local SMEs.

Partnerships with various housing associations (including Clarion, Peabody and Hyde) and Job Centre Plus have also helped us to increase awareness of the GLL service across the borough – as has our face-to-face outreach campaigns in Waterloo and Southbank.

Looking ahead, we plan to explore and attend more local markets and community events, connect with local colleges, and further engage with BIDs in the borough.



TOP 3 AREAS OF SUPPORT REQUESTED

Marketing

Finance

Planning



TOP SECTORS USING THE PLATFORM

Food & drink

Health, fitness & wellness

Fashion & jewellery / General retail

Click [here](#) to view the GLL Q1 Impact report which contains pan-London data

Lewisham

Number of entrepreneurs supported in borough by quarter

15

Nov-Oct-Dec 2023

46

Jan-Mar 2024

71

Apr-Jun 2024

The data below shows activity in borough since the launch of GLL to the end of June 2024

132

Entrepreneurs Supported

1

Service Delivery Partners

1

Service Delivery Partner Provision

1

Borough Service Provision

15

Entrepreneurs supported and referred to Borough or Delivery Partner provision

The Lewisham team, led by Danny O’Sullivan and supported by Winnie Cheng, has been working closely with Raymond at LB Lewisham to establish a greater presence within the borough this quarter.

To increase awareness within the borough, we’ve continued to canvass the SE6 area, formed new partnerships with housing associations (Peabody and Hyde), attended events such as SEEN, and connected with BIPC and the library teams.

Looking ahead, we aim to develop some new relationships with organisations such Cockpit Arts and the Catford Market management team, with a focus on increasing our presence at community led events / markets.



TOP 3 AREAS OF SUPPORT REQUESTED

Marketing

Finance

Planning



TOP SECTORS USING THE PLATFORM

Health, fitness & wellness

Beauty & cosmetics / Wholesale & retail trade

Click [here](#) to view the GLL Q1 Impact report which contains pan-London data

City of London

Number of entrepreneurs supported in borough by quarter

26

Nov-Oct-Dec 2023

65

Jan-Mar 2024

52

Apr-Jun 2024

The data below shows activity in borough since the launch of GLL to the end of June 2024

143

Entrepreneurs Supported

0

Service Delivery Partners

0

Service Delivery Partner Provision

2

Borough Service Provision

2

Entrepreneurs supported and referred to Borough or Delivery Partner provision

The City of London team, led by Abdus Salam, has been diligently building strong working relationships and actively participating in monthly events at the SBREC Centre to support SMEs.

By fostering connections with local network groups like Heart of the City, we have been able to expand our engagement and outreach efforts. Recently, we hosted our first small GLL well-being event at the SBREC.

We were thrilled to be invited to the City of London Corporation's SME Celebration Event, which provided an excellent platform to further our mission to work collaboratively to support the local business community.

Looking ahead, we are committed to identifying and participating in more events and networking opportunities to enhance our engagement and support SMEs in the City of London.



TOP 3 AREAS OF SUPPORT REQUESTED

Marketing

Finance

Digital



TOP SECTORS USING THE PLATFORM

Business services

Fashion & jewellery

Health, fitness & wellbeing

Click [here](#) to view the GLL Q1 Impact report which contains pan-London data

LOCAL LONDON



Enfield

Number of entrepreneurs supported in borough by quarter

15

Nov-Oct-Dec 2023

20

Jan-Mar 2024

38

Apr-Jun 2024

The data below shows activity in borough since the launch of GLL to the end of June 2024

73

Entrepreneurs Supported

0

Service Delivery Partners

0

Service Delivery Partner Provision

0

Borough Service Provision

N/A

Entrepreneurs supported and referred to Borough or Delivery Partner provision

The Enfield team, led by Abdus Salam, has been engaging with Enfield Enterprise. We have connected with Enfield Jobcentre and successfully agreed a claimant referral process with the work coach team leader to engage with harder to reach groups of Inspiring entrepreneurs.

The next step will be to secure a monthly drop-in session for in-person consultation. We look forward to working closely with BIPC local Enfield when it launches in July 2024 to complement BIPC offer.

Looking ahead, the team will focus on identifying and participating in more events and networking opportunities to enhance our engagement efforts.



TOP 3 AREAS OF SUPPORT REQUESTED

Marketing

Finance

Planning



TOP SECTORS USING THE PLATFORM

Business services / Fashion & jewellery / Wholesale & retail trade / General retail / Manufacturing

Click [here](#) to view the GLL Q1 Impact report which contains pan-London data

Waltham Forest

13

Nov-Oct-Dec 2023

28

Jan-Mar 2024

44

Apr-Jun 2024

The data below shows activity in borough since the launch of GLL to the end of June 2024

85

Entrepreneurs Supported

0

Service Delivery Partners

0

Service Delivery Partner Provision

0

Borough Service Provision

N/A

Entrepreneurs supported and referred to Borough or Delivery Partner provision

The Waltham Forest team, led by Sunisha Varsani, have visited some of the local Jobcentre Plus to help us engage with harder to reach groups of aspiring entrepreneurs. We have secured a 'hub' space at Walthamstow JCP. To increase awareness within the borough we have also connected with BIPC and the libraries team who offer business support locally. We've attended a number of events including the BNI Business Networking event, Kickstart Your Business (BIPC) and the SYOB Networking Group.

We hope to work with LB Waltham Forest to identify new ways of engaging with small businesses. We are keen to connect with more local businesses by building partnerships with community organisations such as Waltham Forest Business Network, as well as the Waltham Forest Chamber of Commerce and The Argall Business Improvement District.



TOP 3 AREAS OF SUPPORT REQUESTED

Marketing

Finance

Digital



TOP SECTORS USING THE PLATFORM

Creative & media

Food & drink / Education / Charities

Redbridge

Number of entrepreneurs supported in borough by quarter

10

Nov-Oct-Dec 2023

22

Jan-Mar 2024

32

Apr-Jun 2024

The data below shows activity in borough since the launch of GLL to the end of June 2024

64

Entrepreneurs Supported

0

Service Delivery Partners

0

Service Delivery Partner Provision

7

Borough Service Provision

7

Entrepreneurs supported and referred to Borough or Delivery Partner provision

The Redbridge team, led by Sunisha Varsani, has attended a number of events, including Redbridge Meet The Buyer event, Wanstead Works Women in Business Networking and the Women In Business Network Wanstead Group (WIBN).

We've conducted in-person canvassing activity in and around South Woodford, as well as connecting with The Alternative Board to promote the GLL service to their local business networks. We are also engaging with Redbridge Chamber of Commerce and have attended regular networking sessions to build awareness of our service.

Looking ahead, we hope to build on our relationship with Wanstead Works, by collaborating with them on future events. We are also keen to have further conversations with City Gates, where we hope to host a regular 'drop in' session.



TOP 3 AREAS OF SUPPORT REQUESTED

Marketing

Sales

Finance



TOP SECTORS USING THE PLATFORM

Fashion & jewellery

Business services / Food & drink / Tech & apps / Wholesale & retail trade

Click [here](#) to view the GLL Q1 Impact report which contains pan-London data

Havering

Number of entrepreneurs supported in borough by quarter

8

Nov-Oct-Dec 2023

12

Jan-Mar 2024

22

Apr-Jun 2024

The data below shows activity in borough since the launch of GLL to the end of June 2024

42

Entrepreneurs Supported

0

Service Delivery Partners

0

Service Delivery Partner Provision

0

Borough Service Provision

N/A

Entrepreneurs supported and referred to Borough or Delivery Partner provision

The Havering team, led by Sunisha Varsani, has carried out in-person canvassing in and around Hornchurch High Street and in Romford Town Centre.

We have attended the Local London Partnership group, connecting with business organisations including South-East Enterprise. We've attended several events, including Essex Business Networking @ CREM Kitchen, East London Borders Virtual Networking and Mums in Business Networking Romford & Ilford.

Looking ahead, we hope to explore opportunities with Sergo and possibly host a local hub as well as connect with a greater number of local business groups such as ebn business networking Hornchurch and The Havering Women in Business Group.



TOP 3 AREAS OF SUPPORT REQUESTED

Marketing

Finance

People



TOP SECTORS USING THE PLATFORM

Wholesale & retail trade

Arts, entertainment & recreation / Beauty & cosmetics / Accommodation & food service / Information & communication

Click [here](#) to view the GLL Q1 Impact report which contains pan-London data

Barking and Dagenham

Number of entrepreneurs supported in borough by quarter

7

Nov-Oct-Dec 2023

29

Jan-Mar 2024

52

Apr-Jun 2024

The data below shows activity in borough since the launch of GLL to the end of June 2024

88

Entrepreneurs Supported

1

Service Delivery Partners

0

Service Delivery Partner Provision

0

Borough Service Provision

N/A

Entrepreneurs supported and referred to Borough or Delivery Partner provision

The Barking & Dagenham team, led by Sunisha Varsani, has hosted two Coffee Friday events at Couleur Café in Barking, where local founders connected with like-minded entrepreneurs and support providers.

Through B&D Works, we've been able to connect with aspiring business owners and hope to establish a regular presence at the Employment Centre. We've been offering free money-saving advice to SMEs via Credit Union with whom we hope to collaborate to offer online resources to small businesses. Grow London Local continues to be an active member on the Barking & Dagenham Steering Group Board and has attended a number of events.

We will be holding a regular 'hub' at the Barking and Dagenham Employment Centre. We hope to connect with Barking & Dagenham College to engage with their business students to support them to set up their own business ventures.



TOP 3 AREAS OF SUPPORT REQUESTED

Marketing

Finance

Digital



TOP SECTORS USING THE PLATFORM

Business services/ Food & drink

Health, fitness & wellness / Wholesale & retail trade

Click [here](#) to view the GLL Q1 Impact report which contains pan-London data

Newham

Number of entrepreneurs supported in borough by quarter

22

Nov-Oct-Dec 2023

40

Jan-Mar 2024

78

Apr-Jun 2024

The data below shows activity in borough since the launch of GLL to the end of June 2024

140

Entrepreneurs Supported

0

Service Delivery Partners

0

Service Delivery Partner Provision

0

Borough Service Provision

N/A

Entrepreneurs supported and referred to Borough or Delivery Partner provision

The Newham team, led by Sunisha Varsani and supported by Brandon Merrifield, has made great progress across the borough this quarter.

We worked closely with the GLA and Newham Council to offer support to the businesses displaced from Market Village in Stratford, carried out a range of in-person canvassing and outreach activities and held an in-person ‘drop in’ session at the Royal Dock Sustainability Centre where we hope to establish a more regular presence. We’ve attended a range of events including various Newham Chamber of Commerce Breakfast meetings, a Parents in Business Connect networking and The Business Show 2024.

Looking ahead we hope to connect with a greater number of local business support organisations to amplify our offer. We are currently in conversation with Barclays and will seek to host a coffee morning/networking event in collaboration with them.



TOP 3 AREAS OF SUPPORT REQUESTED

Marketing

Finance

Sales & Digital



TOP SECTORS USING THE PLATFORM

Education

Business services / Food & drink

Greenwich

Number of entrepreneurs supported in borough by quarter

23

Nov-Oct-Dec 2023

39

Jan-Mar 2024

73

Apr-Jun 2024

The data below shows activity in borough since the launch of GLL to the end of June 2024

135

Entrepreneurs Supported

2

Service Delivery Partners

2

Service Delivery Partner Provision

1

Borough Service Provision

6

Entrepreneurs supported and referred to Borough or Delivery Partner provision

The Greenwich team, led by Sunisha Varsani, has been hosting regular 'drop in' sessions, including at Woolwich Centre Library and the Mooring Centre in Thamesmead. We've also attended a number of events, including a South- East Chamber of Commerce networking event at Greenwich Tavern, the Business Breakfast Networking Event hosted by Greenwich Council, and London Brunch Business Networking organised by Network B2B.

We've built strong relationships with a number of housing associations including Peabody and Clarion, who have been helping us promote the service through their extensive networks.

Looking ahead, we plan to further optimise our sessions at Woolwich Centre Library by aligning with the coffee mornings hosted by Start Up Greenwich.



TOP 3 AREAS OF SUPPORT REQUESTED

Marketing

Finance

Digital



TOP SECTORS USING THE PLATFORM

Arts, entertainment & recreation / Creative & media / Fashion & jewellery / Wholesale & retail trade / Charities

Click [here](#) to view the GLL Q1 Impact report which contains pan-London data

Bexley

Number of entrepreneurs supported in borough by quarter

5

Nov-Oct-Dec 2023

14

Jan-Mar 2024

19

Apr-Jun 2024

The data below shows activity in borough since the launch of GLL to the end of June 2024

38

Entrepreneurs Supported

0

Service Delivery Partners

0

Service Delivery Partner Provision

3

Borough Service Provision

9

Entrepreneurs supported and referred to Borough or Delivery Partner provision

The Bexley team, led by Sunisha Varsani, has been working closely with Bexley's Business Support Team to promote their 'Talking Business' programme, and attended the 'Talking Business Showcase' event, where we met with local SMEs in person.

We've continued to attend events hosted by the Outer South London Virtual Network and have attended female-led networking sessions including Ladies that Latte and the FFMI presents No Limits Conference. We have also engaged with CNT Associates to promote GLL's business support offer.

With thanks to LB Bexley for insights and suggestions, we are developing an outreach strategy to engage with a number of industrial estates in the area. We will also be engaging with Clarion Housing Association to host a local hub in the community for businesses to meet the GLL team.



TOP 3 AREAS OF SUPPORT REQUESTED

Finance

Planning

Marketing



TOP SECTORS USING THE PLATFORM

Tech & apps

Business services / Food & drink / Beauty & cosmetics

Click [here](#) to view the GLL Q1 Impact report which contains pan-London data

Bromley

Number of entrepreneurs supported in borough by quarter

15

Nov-Oct-Dec 2023

31

Jan-Mar 2024

31

Apr-Jun 2024

The data below shows activity in borough since the launch of GLL to the end of June 2024

77

Entrepreneurs Supported

1

Service Delivery Partners

1

Service Delivery Partner Provision

0

Borough Service Provision

2

Entrepreneurs supported and referred to Borough or Delivery Partner provision

The Bromley team, led by Sunisha Varsani, has continued to establish a presence in the borough, with canvassing activity taking place in the BR2 and BR4 areas.

We also attended and presented at an event hosted by 1230 The Women’s Company to engage with local female entrepreneurs. We have continued to engage with South-East Chambers and have attended the Local London Partnership group where we met various business partners including School of Social Enterprise and Southeast Enterprise to promote the GLL business support offer to their business networks.

Looking ahead, we hope to establish a fortnightly ‘hub’ at Bromley Library in collaboration with Start Up Bromley. We will also be working with community magazine, ‘Life In Magazines’, to promote GLL services .



TOP 3 AREAS OF SUPPORT REQUESTED

Marketing

Finance

Digital



TOP SECTORS USING THE PLATFORM

Health, fitness & wellness

Arts, entertainment & recreation

Education

Click [here](#) to view the GLL Q1 Impact report which contains pan-London data

WEST LONDON ALLIANCE



Hillingdon

Number of entrepreneurs supported in borough by quarter

5

Nov-Oct-Dec 2023

16

Jan-Mar 2024

54

Apr-Jun 2024

The data below shows activity in borough since the launch of GLL to the end of June 2024

75

Entrepreneurs Supported

0

Service Delivery Partners

0

Service Delivery Partner Provision

0

Borough Service Provision

N/A

Entrepreneurs supported and referred to Borough or Delivery Partner provision

The Hillingdon team lead by Rishi Kardile has been busy building new relationships with local communities and network groups (such as Hayes Township Forum, Women in Business). They have attended multiple events such as the Hillingdon Business Expo, Hayes Canal Festival, Hillingdon and Uxbridge Business Event. The new relationship with The Hillingdon Chamber of Commerce has helped to connect Grow London Local with useful contacts within the borough.

Looking ahead, we will continue reaching out to SME owners within the area and support them. Our upcoming GLL Coffee Friday, in August, will be held in Hillingdon Borough, enabling like-minded entrepreneurs to share their challenges, network and find out how GLL can support them.



TOP 3 AREAS OF SUPPORT REQUESTED

Marketing

Planning

Sales & Digital



TOP SECTORS USING THE PLATFORM

Business services / Education / Tech & apps / Professional consultant / Beauty & cosmetics

Click [here](#) to view the GLL Q1 Impact report which contains pan-London data

Harrow

Number of entrepreneurs supported in borough by quarter

7

Nov-Oct-Dec 2023

20

Jan-Mar 2024

51

Apr-Jun 2024

The data below shows activity in borough since the launch of GLL to the end of June 2024

78

Entrepreneurs Supported

2

Service Delivery Partners

2

Service Delivery Partner Provision

0

Borough Service Provision

4

Entrepreneurs supported and referred to Borough or Delivery Partner provision

The Harrow team, led by Rishi Kardile, has been busy building new relationships with local communities and networking groups such as Pinner Women in Business, BNI, and Harrow Networking. They have attended events such as the LONDON E-Business Support Programme, and Harrow Networking @ Metro Bank. They have also been canvassing local business areas around Harrow High Street.

The team is now actively looking to identify and establish Hub spaces for small business owners to come and meet with the Business Support Managers face to face.

Looking ahead, the team will continue identifying and participating in more events and networking opportunities to enhance our engagement efforts.



TOP 3 AREAS OF SUPPORT REQUESTED

Marketing

Planning

Finance



TOP SECTORS USING THE PLATFORM

Health, fitness & wellness / Construction

Food & drink

Barnet

Number of entrepreneurs supported in borough by quarter

15

Nov-Oct-Dec 2023

45

Jan-Mar 2024

63

Apr-Jun 2024

The data below shows activity in borough since the launch of GLL to the end of June 2024

123

Entrepreneurs Supported

1

Service Delivery Partners

1

Service Delivery Partner Provision

2

Borough Service Provision

83

Entrepreneurs supported and referred to Borough or Delivery Partner provision

The Barnet team, lead by Rishi Kardile, has been busy building new relationships with local communities, network groups (arts depot, CB Plus, North London Chamber of Commerce), Jobcentre Plus and Incubator/co-working locations, such as YES. We have a regular presence in the borough via our newly formed relationship with the Post office. We also ran a successful GLL Coffee Friday event in May 2024 at a local coffee shop. The group is now meeting periodically.

Looking ahead, the team will continue to identify and participate in events and networking opportunities to enhance our engagement efforts. We will also actively look to identify and establish 'hub' spaces for small business owners to come and meet with the Business Support Manager face to face.



TOP 3 AREAS OF SUPPORT REQUESTED

Marketing

Planning

Finance



TOP SECTORS USING THE PLATFORM

Arts, entertainment & recreation

Business services

Food & drink / Education

Click [here](#) to view the GLL Q1 Impact report which contains pan-London data

Ealing

Number of entrepreneurs supported in borough by quarter

19

Nov-Oct-Dec 2023

32

Jan-Mar 2024

46

Apr-Jun 2024

The data below shows activity in borough since the launch of GLL to the end of June 2024

97

Entrepreneurs Supported

0

Service Delivery Partners

0

Service Delivery Partner Provision

1

Borough Service Provision

3

Entrepreneurs supported and referred to Borough or Delivery Partner provision

The Ealing team, lead by Rishi Kardile, has been building new relationships with local communities, network groups, Jobcentre Plus, faith groups such as mosque, churches, temple, and Gurudwaras. The team is scheduled to meet with the council contact later in July to explore more collaborative ways of working together and being introduced to key stakeholders by the council.

The team is hoping to establish hub space for small business owners to come and meet with GLL Business Support Managers face to face.

Looking ahead, the team will continue to identify and participate in events and networking opportunities to enhance our engagement efforts.



TOP 3 AREAS OF SUPPORT REQUESTED

Marketing

Planning

Finance



TOP SECTORS USING THE PLATFORM

Food & drink

Creative & media / Education / Beauty & cosmetics

Click [here](#) to view the GLL Q1 Impact report which contains pan-London data

Brent

Number of entrepreneurs supported in borough by quarter

11

Nov-Oct-Dec 2023

23

Jan-Mar 2024

29

Apr-Jun 2024

The data below shows activity in borough since the launch of GLL to the end of June 2024

63

Entrepreneurs Supported

0

Service Delivery Partners

0

Service Delivery Partner Provision

0

Borough Service Provision

N/A

Entrepreneurs supported and referred to Borough or Delivery Partner provision

The Brent team, led by Rishi Kardile, has been building new relationships with local communities and networking groups. We have attended a number of events such as Rebel Business School's business workshops. The team is trying to establish 'hub' spaces for small business owners to come and meet with the Business Support Manager face to face.

Looking ahead, the team will continue to identify and participate in events and networking opportunities to enhance our engagement efforts.



TOP 3 AREAS OF SUPPORT REQUESTED

Marketing

Finance

Planning



TOP SECTORS USING THE PLATFORM

Food & drink / Fashion & jewellery

Business services / Education / Construction / General retail

Click [here](#) to view the GLL Q1 Impact report which contains pan-London data

Hammersmith & Fulham

Number of entrepreneurs supported in borough by quarter

10

Nov-Oct-Dec 2023

32

Jan-Mar 2024

26

Apr-Jun 2024

The data below shows activity in borough since the launch of GLL to the end of June 2024

68

Entrepreneurs Supported

0

Service Delivery Partners

0

Service Delivery Partner Provision

0

Borough Service Provision

N/A

Entrepreneurs supported and referred to Borough or Delivery Partner provision

The Hammersmith and Fulham team, lead by Rishi Kardile, has been building new relationships with local communities and network groups. They have attended events such as Mega May Networking Event, Edge of the Box Club, LBHF Networking Event, and canvassing around King Street. The team have also arranged a Coffee Friday at one of the local coffee shops on King Street, creating an opportunity for local business to meet with team Grow London Local in person.

The team is trying to establish 'hub' space for small business owners to come and meet with the Business Support Manager face to face.

Looking ahead, the team will continue to identify and participate in events and networking opportunities to enhance our engagement efforts.



TOP 3 AREAS OF SUPPORT REQUESTED

Marketing

Finance

Digital



TOP SECTORS USING THE PLATFORM

Business services

Health, fitness & wellness / Creative & media / Tech & apps / Professional consultant

Click [here](#) to view the GLL Q1 Impact report which contains pan-London data

Hounslow

Number of entrepreneurs supported in borough by quarter

20

Nov-Oct-Dec 2023

23

Jan-Mar 2024

33

Apr-Jun 2024

The data below shows activity in borough since the launch of GLL to the end of June 2024

76

Entrepreneurs Supported

0

Service Delivery Partners

0

Service Delivery Partner Provision

0

Borough Service Provision

N/A

Entrepreneurs supported and referred to Borough or Delivery Partner provision

The Hounslow team, led by Rishi Kardile, has been busy building new relationships with local communities (such as Tamil, Goan, and Rajasthani (Indian regional community associations), network groups, Jobcentre Plus and canvassing local business areas included Hounslow Central, East and West. We plan to attend community events such as the upcoming Goa Day in July 2024.

More recently, we organised a Coffee Friday event targeted at the hospitality sector, creating an opportunity for business owners to come and meet in person with the Grow London Local team and network with like-minded entrepreneurs.

Looking ahead, the team will continue to identify and participate in events and networking opportunities to enhance our engagement efforts.



TOP 3 AREAS OF SUPPORT REQUESTED

Marketing

Planning

Digital



TOP SECTORS USING THE PLATFORM

Business Services

Health, fitness & wellness

Food & drink / Creative & media / Education

Click [here](#) to view the GLL Q1 Impact report which contains pan-London data



THANK YOU

